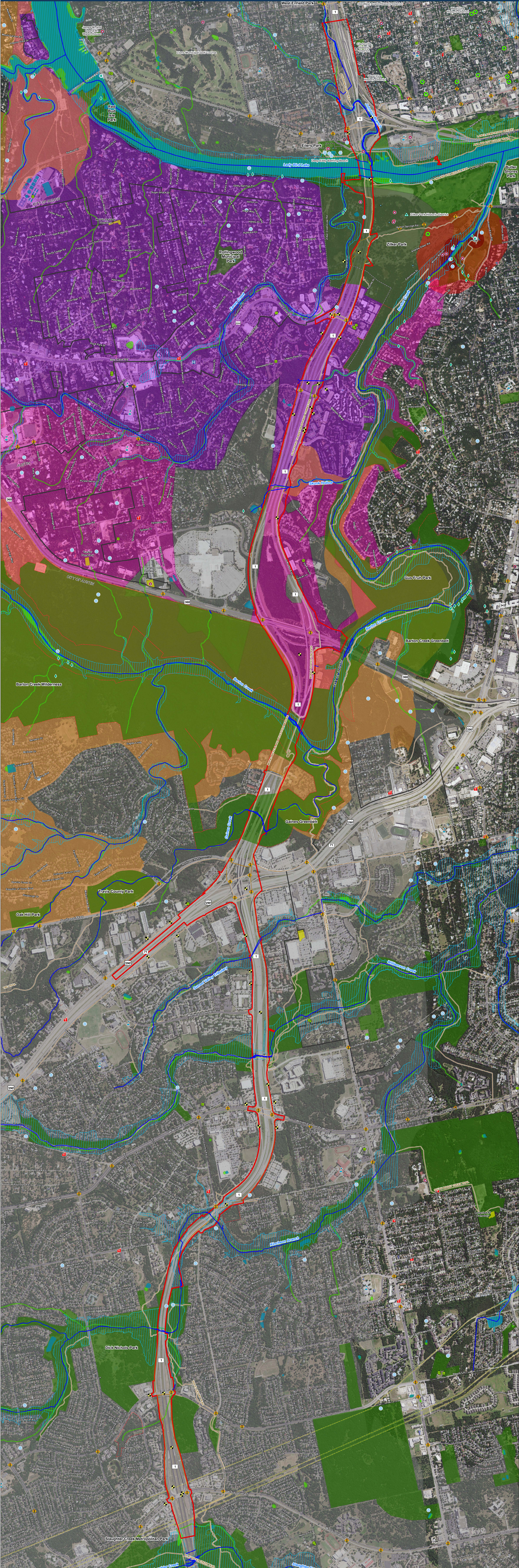


MoPac South from Cesar Chavez Street to Slaughter Lane

CSJ: 3136-01-176



MoPac South from Cesar Chavez Street to Slaughter Lane, Travis County, CSJ:3136-01-176 Environmental Constraints Map

Copyright 2024
 Notice
 Accuracy is limited to the validity of available data as of November 1, 2024.

Central Texas Regional
 Mobility Authority

November 2024

Austin: USDA NHP 2022
 100-Year Floodplain: FEMA Flood Hazard Layer 2020; Active Gas Pipelines: TFRRC 2024; Baldpate Canyonlands Preserve BCCP; Travis County 2024
 City of Austin: 2024 City Directory; 2020 Flood Hazard Layer; 2007 Flood Hazard Layer; City of Austin Landmarks; City of Austin Public Communications Tower; 2022 2024
 Golden-cheeked Warbler Habitat: Travis County 1996; City of Austin 2016; Hays County 2016; Hays County 2016; Hays County 2016; Hays County 2016
 Parks: City of Austin 2024; Hays County 2024; Hays County 2024; Hays County 2024; Hays County 2024; Hays County 2024; Hays County 2024; Hays County 2024
 Official Texas Historical Markers: THC 2020; Open Water: USGS 2014
 River/Stream: USGS 2023; Active Gas Pipelines: TFRRC 2024; Travis County 2024; Travis County 2024; Travis County 2024; Travis County 2024
 Springs and Seeps: City of Austin Critical Environmental Features (CEFE) 2024; Travis County 2024; Travis County 2024; Travis County 2024
 Urban Trails: City of Austin 2024; Hays County 2024; Hays County 2024; Hays County 2024; Hays County 2024; Hays County 2024; Hays County 2024; Hays County 2024

